

# NEW YORK SCHOOL-BASED HEALTH CENTERS: A 2022-2023 STATEWIDE DATA SNAPSHOT

## NY's School-Based Health Centers at a Glance

- **252** School-Based Health Centers (SBHCs) in New York
- NY SBHCs provide services to **~250,000** Public School students in urban and rural Communities
- Wide-range of services including primary care, vaccinations, dental care, mental health, reproductive health, chronic disease management, and more

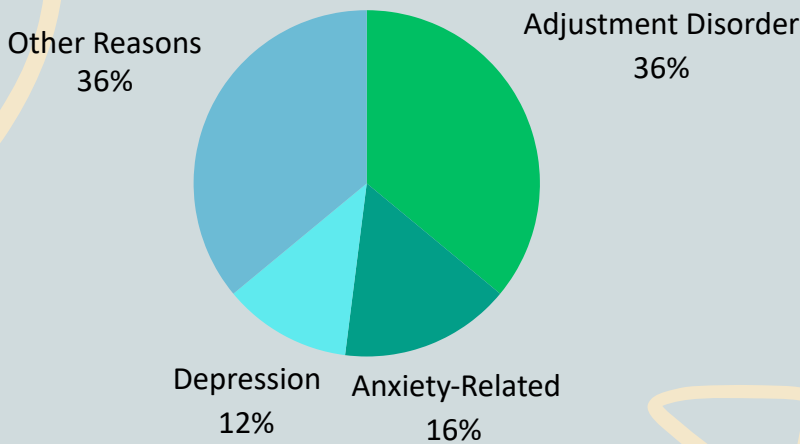
## About NYSBHF Data Hub

This year's annual report includes data from the New York School-Based Health Foundation (NYSBHF) Data Hub, representing:

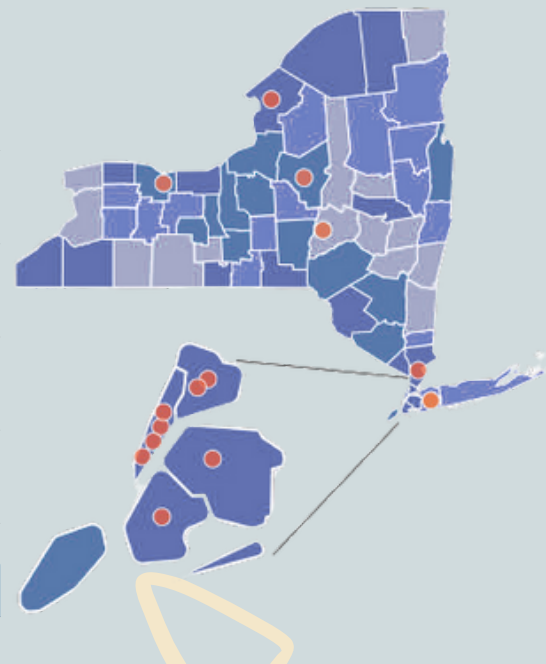
- **52%** of NY SBHCs
- **14** sponsoring organizations
- **132** SBHCs
- **63,486** students
- **250,805** visits



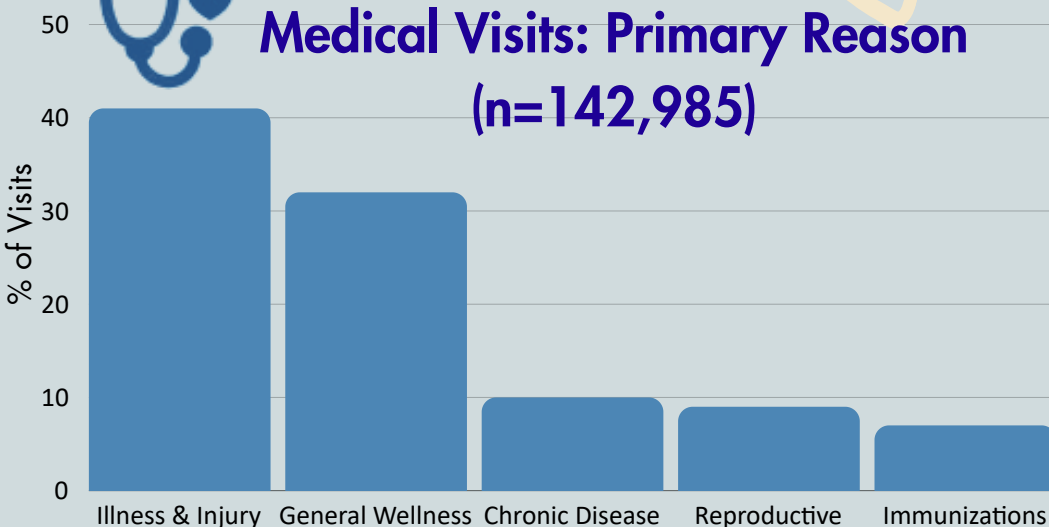
## Behavioral Health Visits: Primary Reason (n=63,496)



## Map of Sponsoring Organizations in Report



## Medical Visits: Primary Reason (n=142,985)



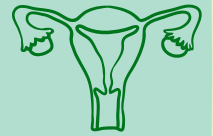
# 2022-2023 SBHC STATEWIDE DATA SNAPSHOT FAST FACTS

**35%** of SBHC patients received a comprehensive physical exam at an SBHC



1 in 4 students received a vaccination at an SBHC

29% of medical visits for 13-19 year-olds included reproductive health care



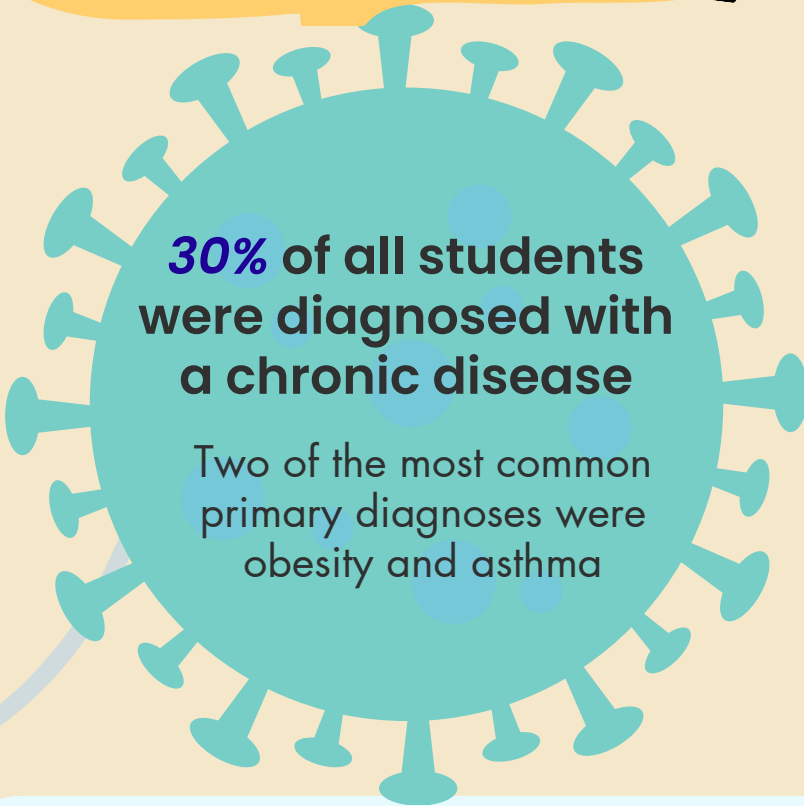
43% of students were covered by Medicaid. 13% were Uninsured.

47% of students identified as Hispanic. (43% Non-Hispanic, 10% missing or unknown)



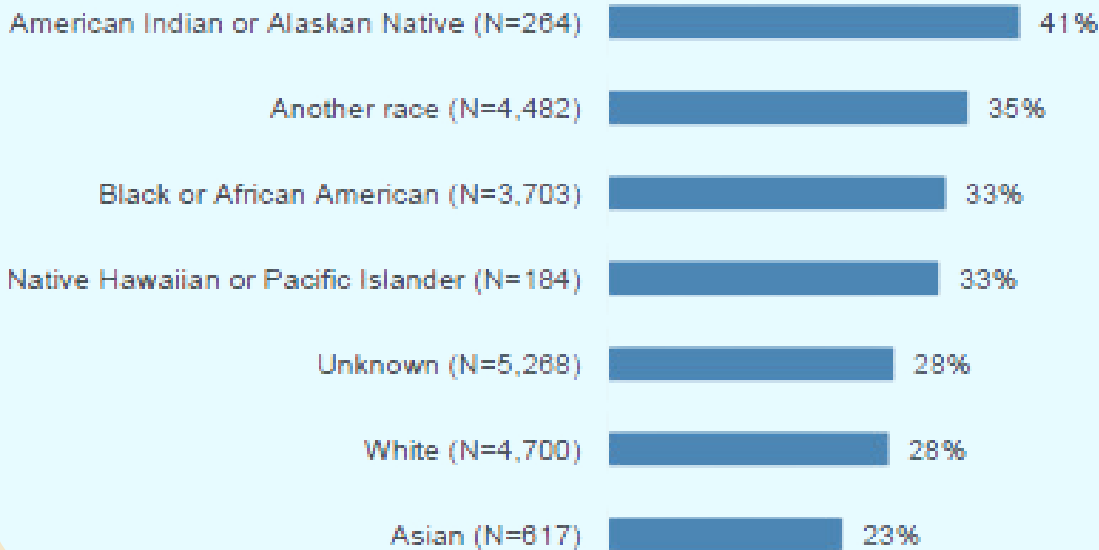
**30%** of all students were diagnosed with a chronic disease

Two of the most common primary diagnoses were obesity and asthma



## Chronic Disease Breakdown by Race

Chronic disease rates varied widely by race



Download the full report here:



Learn more about the data hub and help our growth! We're at 60% SBHC coverage; As participation grows, the data becomes more representative and powerful. Please Join us!

[nysbhfoundation.org/data-hub](https://nysbhfoundation.org/data-hub)